



Hurricane Ian Advisory #19

For Planning Purposes Only!

WASHINGTON, DC
17:52:04
27 Sep 2022

CHICAGO
16:52:04
27 Sep 2022

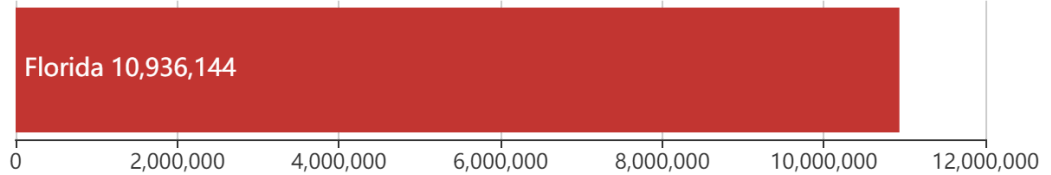
LOS ANGELES
14:52:04
27 Sep 2022

<https://simsuite.usace.army.mil/wab/v2.15/MissionModels/#advid=270&oid=84&name=Hurricane%20Ian&advisory=Advisory%20%2319&advlf=G>

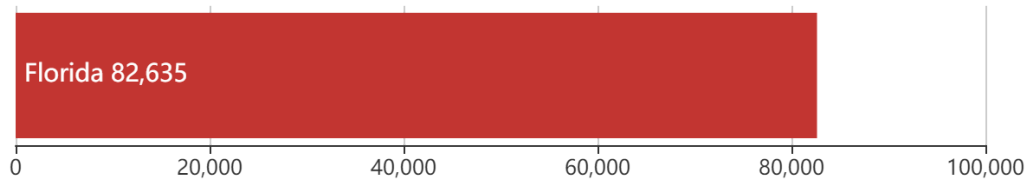
Updated as of 27 Sep 2022 (4:52 PM Central Daylight Time)

Debris

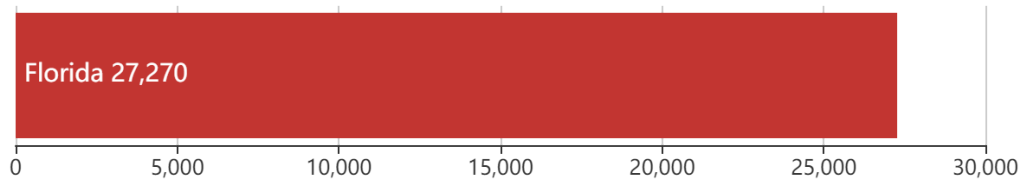
10.9M
cu. yd.



Est. Temp. Roofing
82.6K
units

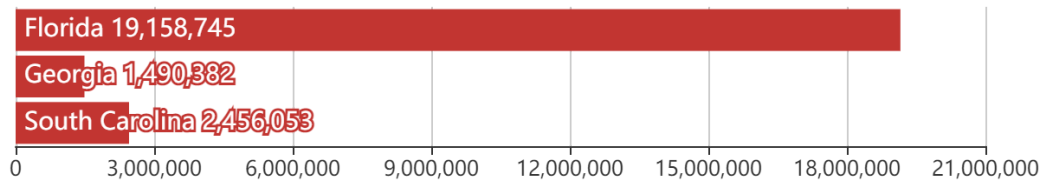


Act. Temp. Roofing
27.3K
units



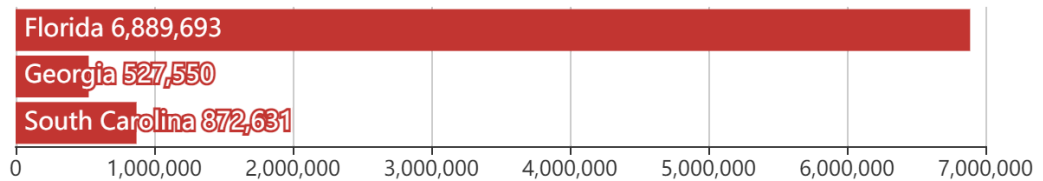
Population

23.1M
people



Households

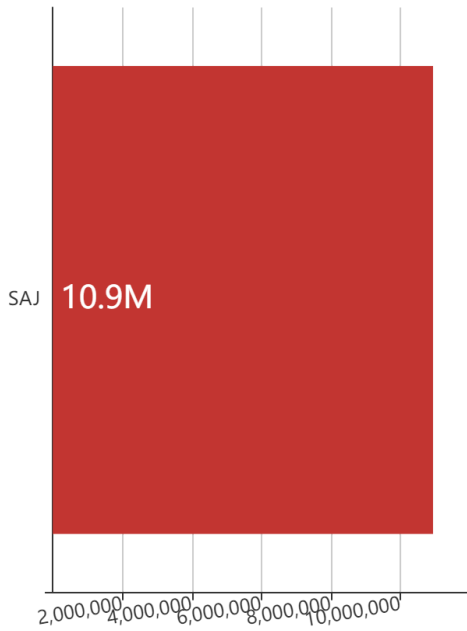
8.3M
households



Mission Model Summary

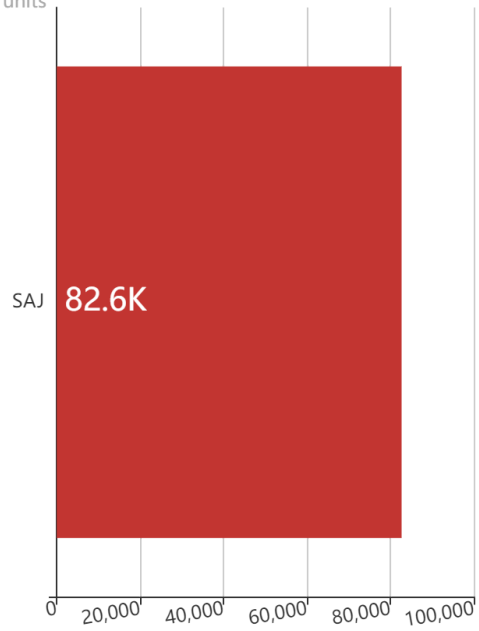
Debris By USACE District

cu. yd.

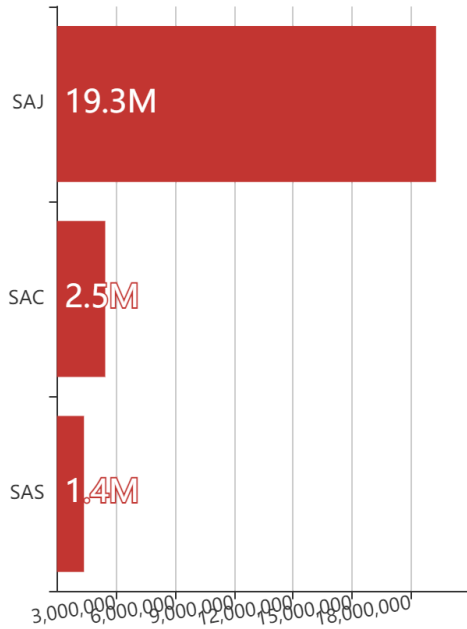


Est. Temp. Roofing By USACE District

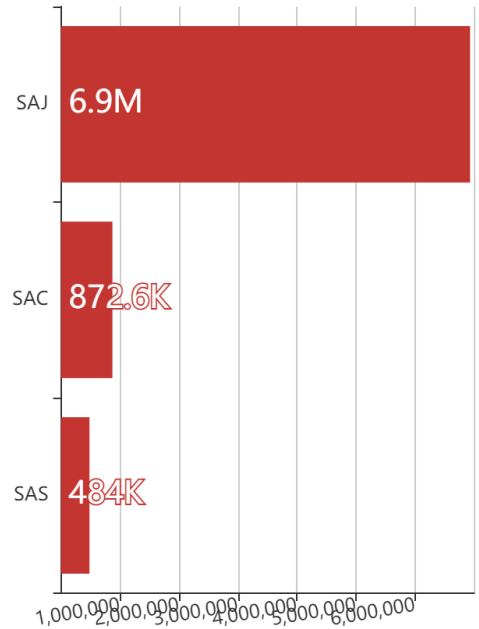
units



Population By USACE District



Households By USACE District



Critical Infrastructure Summary

Total

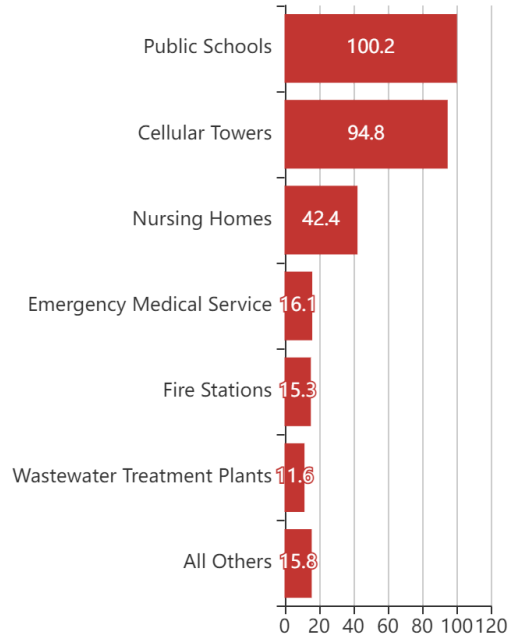


Power Requirements



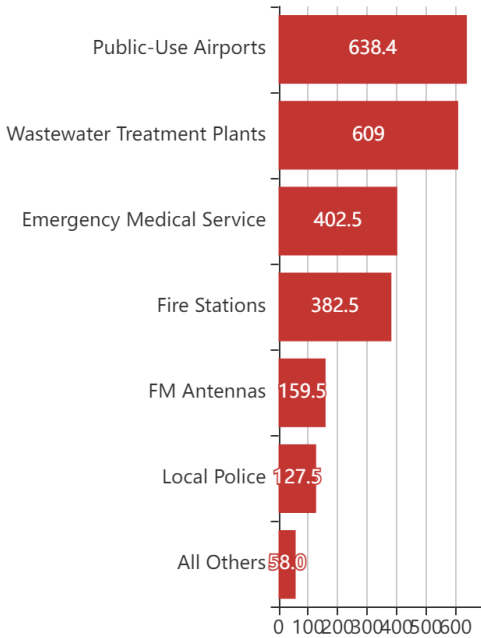
Generators

By Generator Count



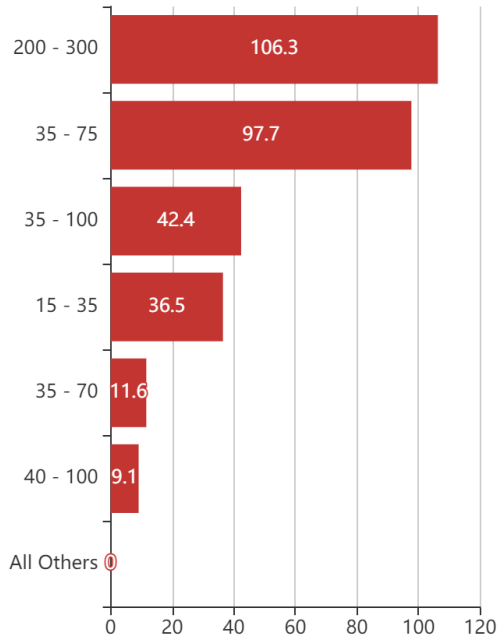
Generators

By Power Requirement



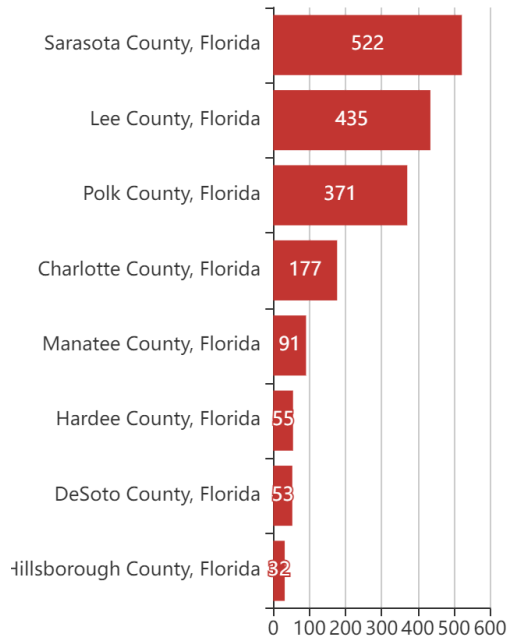
Generators

By Range



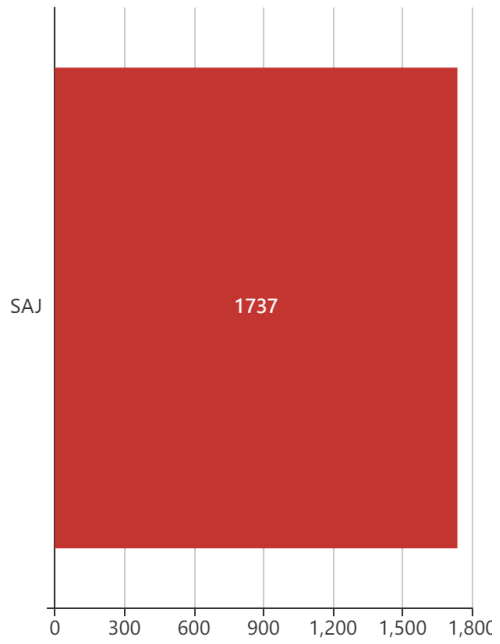
Structures

By County



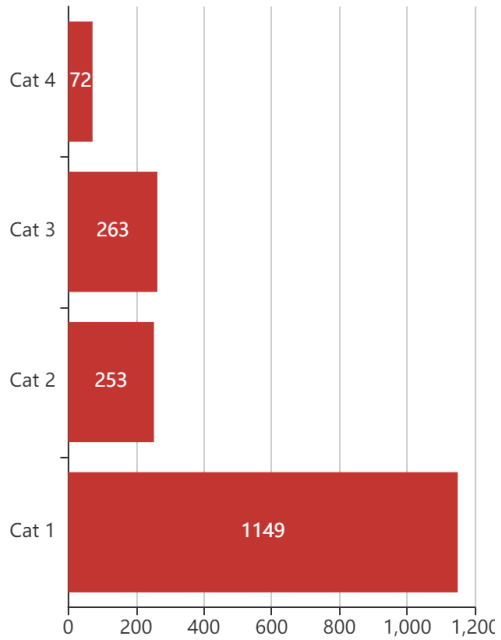
Structures

By USACE District

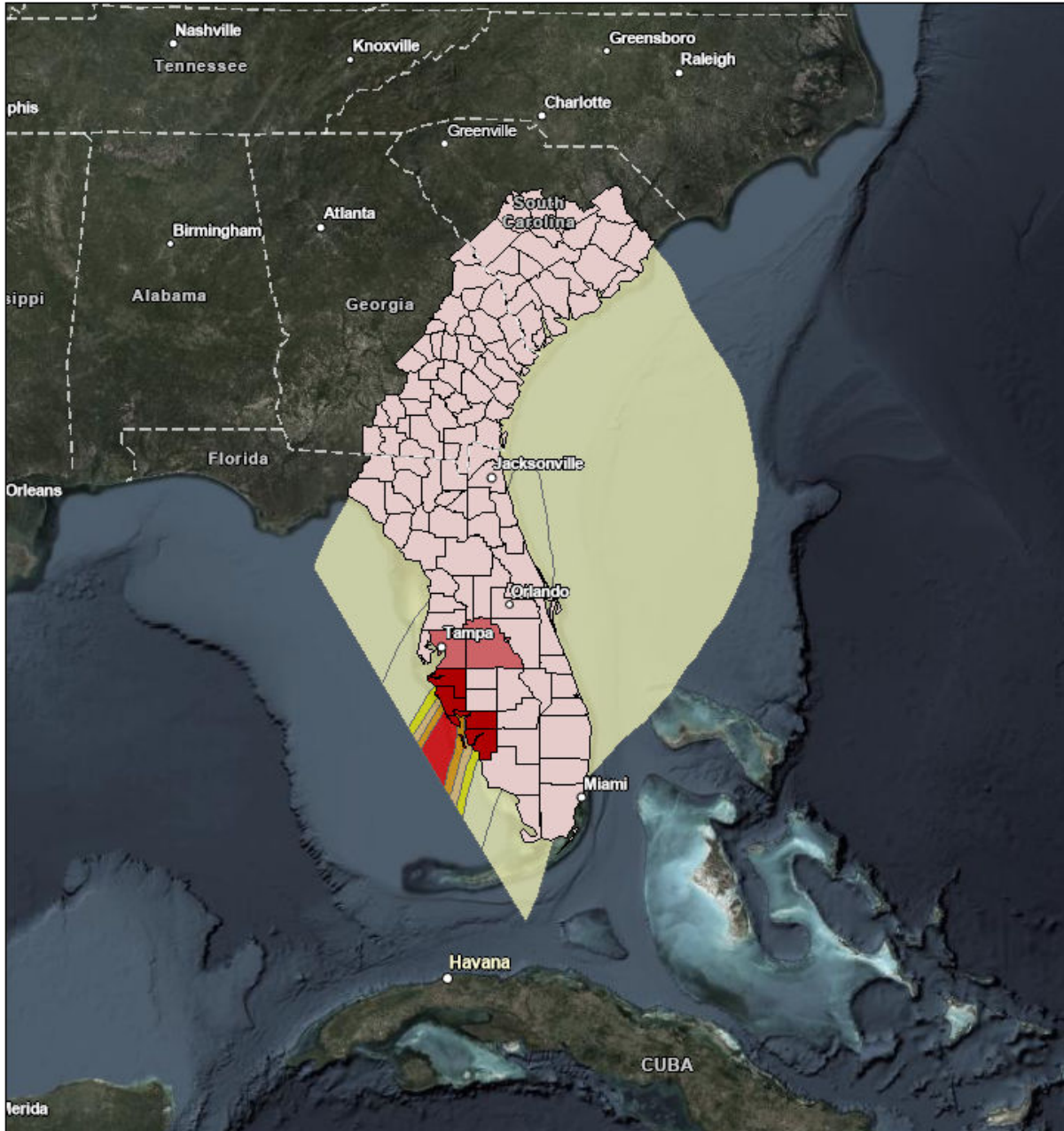


Structures

By Intensity



Letter ANSI A Portrait



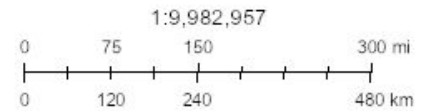
Mission Summaries

- < 100,000 cubic yards
- 250,000 - 499,999 cubic yards

Mission Model Swaths

- TS

- Cat 1
- Cat 2
- Cat 3
- Cat 4



Esri, HERE, Garmin, FAO, NOAA, USGS, EPA, Source: Esri, DigitalGlobe, GeoEye, Earthstar Geographics, CNES/Airbus DS, USDA, USGS, AeroGRID, IGN, and the GIS User Community

Debris

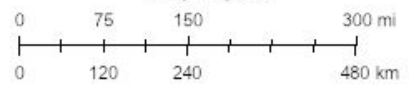


Debris

 < 100,000 cubic yards

 250,000 - 499,999 cubic yards

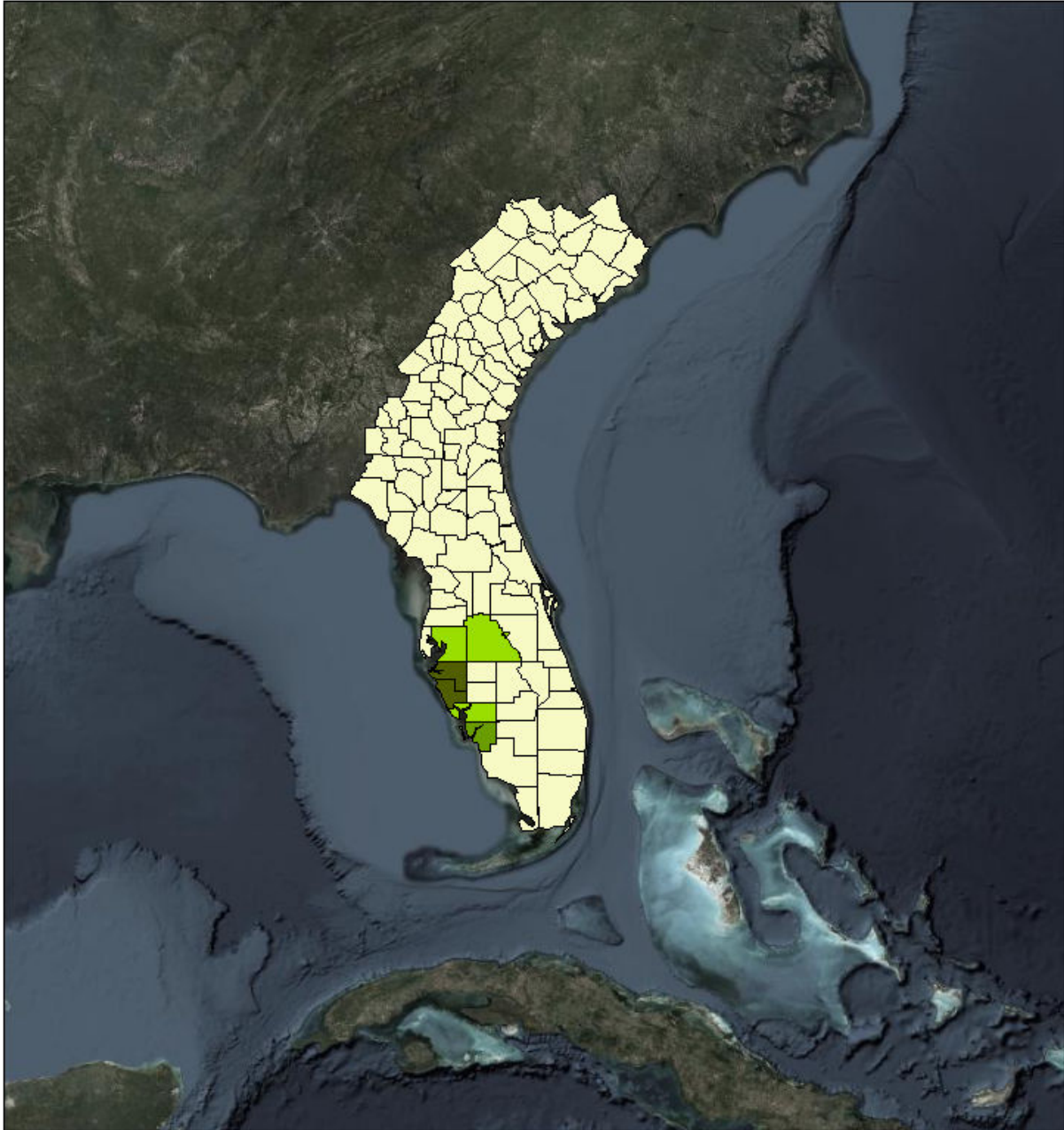
1:10,271,853



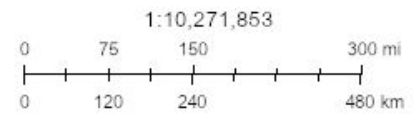
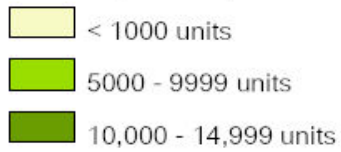
Source: Esri, DigitalGlobe, GeoEye, Earthstar Geographics, CNES/Airbus DS, USDA, USGS, AeroGRID, IGN, and the GIS User Community

Created by SimSuite

Est. Temp. Roofing



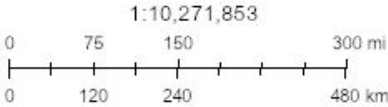
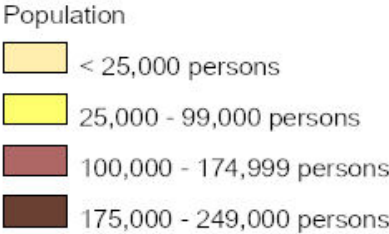
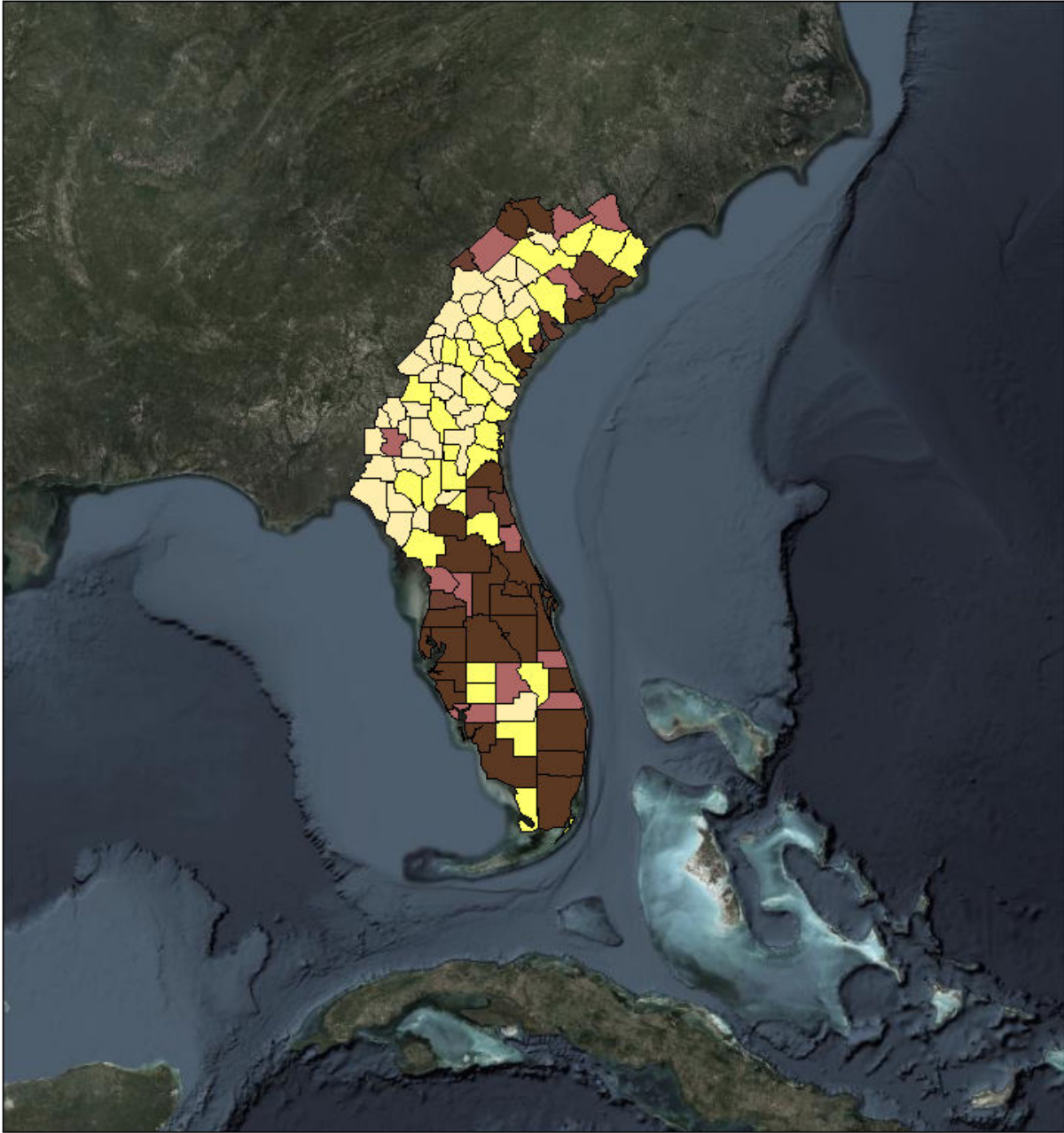
Est. Temp. Roofing



Source: Esri, DigitalGlobe, GeoEye, Earthstar Geographics, CNES/Airbus DS, USDA, USGS, AeroGRID, IGN, and the GIS User Community

Created by SimSuite

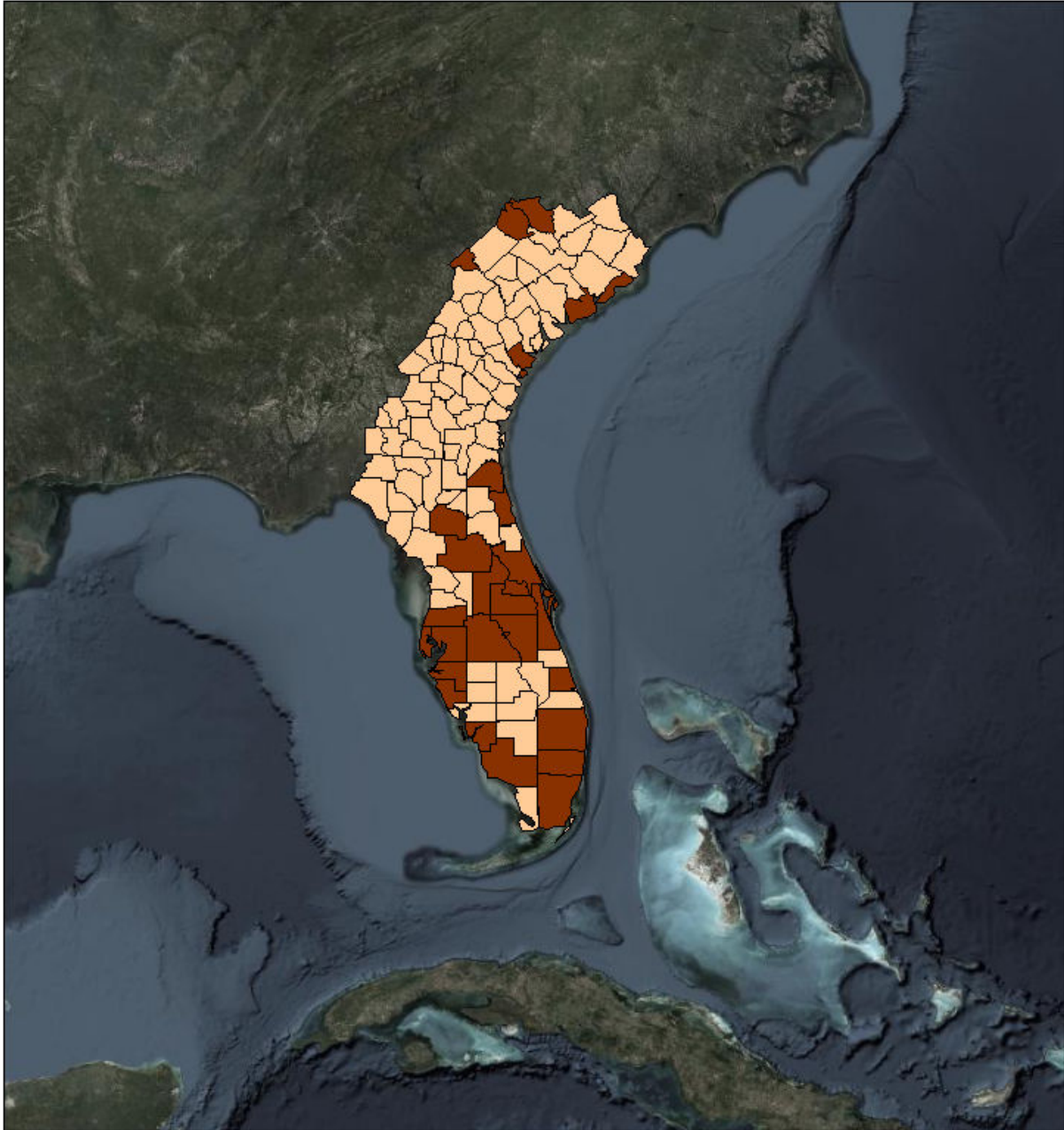
Population



Source: Esri, DigitalGlobe, GeoEye, Earthstar Geographics, CNES/Airbus DS, USDA, USGS, AeroGRID, IGN, and the GIS User Community

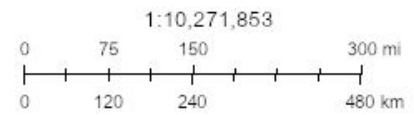
Created by SimSuite

Households



Households

- < 7,500 Households
- 15,000 - 24,999 Households
- 25,000 - 49,999 Households



Source: Esri, DigitalGlobe, GeoEye, Earthstar Geographics, CNES/Airbus DS, USDA, USGS, AeroGRID, IGN, and the GIS User Community

Created by SimSuite

Mission Summary



The mission models account for storm surge and wind damage only, but do not account for other related storm hazards that may affect the mission estimates.

Mission Summary	
Total Counties	8
Debris (cu. yd.)	10,936,144
Est. Temp. Roofing (units)	82,635
Act. Temp. Roofing (units)	27,270
Population	23,105,180
Households	8,289,874

Population Distribution	
Tropical Storm	27,699,841
Category 1	1,141,283
Category 2	354,744
Category 3	276,172
Category 4	76,942

FLORIDA	Yds of Debris (10,936,144)	Est. Roof Units (82,635)	Act. Roof Units (27,270)	Population (19,158,745)	Households (6,889,693)
Alachua	0	0	0	262,216	100,516
Baker	0	0	0	28,042	8,772
Bradford	0	0	0	26,996	9,479
Brevard	0	0	0	578,927	229,692
Broward	0	0	0	1,883,555	686,047
Charlotte	1,093,754	6,069	2,003	173,978	73,370
Citrus	0	0	0	144,825	63,304
Clay	0	0	0	209,524	68,792
Collier	0	0	0	368,652	133,179
Columbia	0	0	0	69,419	24,941
DeSoto	51,534	871	287	36,506	11,445
Dixie	0	0	0	16,299	6,316
Duval	0	0	0	932,755	342,450
Flagler	0	0	0	108,166	39,186
Gilchrist	0	0	0	17,436	6,121
Glades	0	0	0	13,588	4,533
Hamilton	0	0	0	14,344	4,617
Hardee	31,510	595	196	28,518	8,245
Hendry	0	0	0	39,553	12,025
Hernando	0	0	0	182,273	71,745
Highlands	0	0	0	102,012	42,604
Hillsborough	383,847	8,517	2,811	1,382,695	474,030

Indian River	0	0	0	149,718	60,176
Lafayette	0	0	0	8,476	2,580
Lake	0	0	0	339,742	121,289
Lee	1,035,746	14,062	4,641	720,426	259,818
Levy	0	0	0	41,097	16,404
Madison	0	0	0	18,862	6,985
Manatee	1,380,022	15,084	4,978	376,566	135,729
Marion	0	0	0	350,915	137,726
Martin	0	0	0	156,333	63,899
Miami-Dade	0	0	0	2,702,302	867,352
Monroe	0	0	0	77,537	32,629
Nassau	0	0	0	80,628	28,794
Okeechobee	0	0	0	39,837	14,013
Orange	0	0	0	1,332,714	421,847
Osceola	0	0	0	333,980	90,603
Palm Beach	0	0	0	1,441,728	544,227
Pasco	0	0	0	512,082	189,612
Pinellas	0	0	0	968,279	415,876
Polk	313,130	6,948	2,293	662,431	227,485
Putnam	0	0	0	74,098	29,409
Sarasota	6,646,601	30,489	10,061	414,899	175,746
Seminole	0	0	0	457,650	164,706
St. Johns	0	0	0	238,439	75,338
St. Lucie	0	0	0	302,601	108,523
Sumter	0	0	0	125,329	41,361
Suwannee	0	0	0	44,733	15,953
Taylor	0	0	0	22,641	7,920
Union	0	0	0	15,704	4,048
Volusia	0	0	0	528,719	208,236

GEORGIA	Yds of Debris (0)	Est. Roof Units (0)	Act. Roof Units (0)	Population (1,490,382)	Households (527,550)
Appling	0	0	0	18,451	6,969
Atkinson	0	0	0	9,278	2,983
Bacon	0	0	0	11,414	4,214
Berrien	0	0	0	19,179	7,443
Brantley	0	0	0	18,729	6,885
Brooks	0	0	0	15,810	6,457
Bryan	0	0	0	37,469	10,738
Bulloch	0	0	0	73,263	25,575
Burke	0	0	0	22,837	8,533
Camden	0	0	0	53,037	18,047
Candler	0	0	0	10,868	4,041
Charlton	0	0	0	13,121	3,927
Chatham	0	0	0	292,686	103,038
Clinch	0	0	0	6,915	2,572
Coffee	0	0	0	44,088	14,817
Cook	0	0	0	17,974	6,339
Echols	0	0	0	4,137	1,329
Effingham	0	0	0	60,602	18,092
Emanuel	0	0	0	23,103	8,430
Evans	0	0	0	11,202	4,033
Glynn	0	0	0	84,625	31,774
Jeff Davis	0	0	0	15,280	5,689
Jenkins	0	0	0	9,170	3,192
Lanier	0	0	0	10,158	3,608
Liberty	0	0	0	64,510	22,155
Long	0	0	0	18,728	5,023
Lowndes	0	0	0	114,022	39,747
McIntosh	0	0	0	13,862	5,971
Montgomery	0	0	0	9,422	3,287
Pierce	0	0	0	19,286	7,083
Richmond	0	0	0	204,200	76,924
Screven	0	0	0	14,427	5,596
Tattnall	0	0	0	25,147	8,210
Telfair	0	0	0	16,196	5,543
Toombs	0	0	0	27,659	10,375
Treutlen	0	0	0	6,916	2,543
Ware	0	0	0	35,094	13,654
Wayne	0	0	0	29,612	10,562
Wheeler	0	0	0	7,905	2,152

SOUTH CAROLINA	Yds of Debris (0)	Est. Roof Units (0)	Act. Roof Units (0)	Population (2,456,053)	Households (872,631)
Aiken	0	0	0	170,230	64,253
Allendale	0	0	0	9,774	3,706
Bamberg	0	0	0	15,050	6,048
Barnwell	0	0	0	21,937	8,937
Beaufort	0	0	0	187,450	64,945
Berkeley	0	0	0	207,154	65,419
Calhoun	0	0	0	14,883	6,080
Charleston	0	0	0	403,176	144,309
Clarendon	0	0	0	34,844	13,132
Colleton	0	0	0	38,408	15,131
Dorchester	0	0	0	157,283	50,259
Florence	0	0	0	140,540	52,653
Georgetown	0	0	0	62,847	24,524
Hampton	0	0	0	21,006	7,598
Jasper	0	0	0	30,101	8,517
Lexington	0	0	0	291,357	102,733
Orangeburg	0	0	0	91,282	35,788
Richland	0	0	0	416,367	145,194
Sumter	0	0	0	109,033	40,398
Williamsburg	0	0	0	33,331	13,007

Critical Infrastructure

Summary			
Total Critical Facilities		1,737	
Power Requirements (kW)		47,112.8	
Range (kW)			
Communications	# FED Gen Req	Range (kW)	Req kW
Cellular Towers (158)	94.8	35 - 75	5,214.0
FM Antennas (58)	2.9	35 - 75	159.5
Education	# FED Gen Req	Range (kW)	Req kW
Private Schools (111)	0.0	200 - 300	0.0
Public Schools (334)	100.2	200 - 300	25,050.0
Colleges and Universities (25)	0.5	200 - 300	125.0
Emergency Services	# FED Gen Req	Range (kW)	Req kW
911 Call Centers (0)	0.0	15 - 35	0.0
Emergency Medical Service (161)	16.1	15 - 35	402.5
Fire Stations (153)	15.3	15 - 35	382.5
Healthcare	# FED Gen Req	Range (kW)	Req kW
Nursing Homes (283)	42.4	35 - 100	2,865.4
Hospitals (24)	7.2	800 - 2000	10,080.0
Urgent Care Facilities (28)	5.6	200 - 300	1,400.0
Law Enforcement	# FED Gen Req	Range (kW)	Req kW
Local Police (51)	5.1	15 - 35	127.5
Correctional Facilities (0)	0.0	400 - 600	0.0
State and Local EOCs	# FED Gen Req	Range (kW)	Req kW
Local Emergency Operations Centers (8)	1.6	15 - 40	44.0
State Emergency Operation Centers (EOCs) (0)	0.0	15 - 35	0.0
State Facilities	# FED Gen Req	Range (kW)	Req kW
Governors Mansions (0)	0.0	100 - 200	0.0
Major State Government Buildings (1)	0.1	100 - 200	15.0

Transportation	# FED Gen Req	Range (kW)	Req kW
Amtrack Stations (6)	0.0	100 - 300	0.0
Bus Stations (7)	0.0	100 - 300	0.0
Intermodal Terminal Facilities (15)	0.0	100 - 300	0.0
Railroad Stations (6)	0.0	100 - 300	0.0
Public-Use Airports (76)	9.1	40 - 100	638.4

Water and Wastewater	# FED Gen Req	Range (kW)	Req kW
Wastewater Treatment Plants (232)	11.6	35 - 70	609.0

Poverty Level

#	County	Cat	Pop. below Federal poverty line	% Population
1	Lee County	4	88,294	12
2	Sarasota County	4	36,496	9
3	Charlotte County	4	19,302	11
4	Manatee County	3	42,675	11
5	DeSoto County	2	9,200	26
6	Hardee County	2	6,189	25
7	Hillsborough County	1	200,179	14
8	Polk County	1	104,509	15

COVID-19

#	County	Cases
1	Hillsborough	455,614
2	Polk	245,072
3	Lee	229,428
4	Manatee	117,012
5	Sarasota	114,303
6	Charlotte	45,089
7	DeSoto	10,790
8	Hardee	9,921

Report Generated by SimSuite

<https://simsuite.usace.army.mil/wab/v2.15/MissionModels/#advid=270&oid=84&name=Hurricane%20Ian&advisory=Advisory%20%2319&advlf=G>